

Hi! We are

GIA HUNG TIEN.

GHT



Profile Upgrade Control System Harbor Cranes



UPGRADING SERVICES

**Upgrade Control System 02 STS
Cranes-VIMC-DV Port**



**Upgrade Control System Gottwald
MHC Crane Thi Vai General Port**



**Upgrade Control System 01 STS
Cranes-SITV Port**





UPGRADING SERVICES

CONTROL SYSTEM 02 STS CRANES

VIMC-DINH VU PORT

Upgrade
Control
System
STS Cranes

VIMC-DV
Port





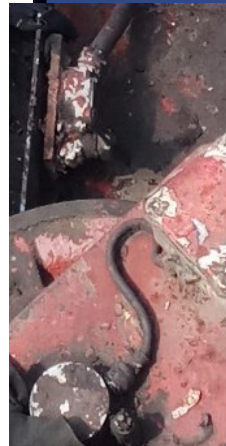
UPGRADING SERVICES

CONTROL SYSTEM 02 STS CRANES

VIMC-DINH VU PORT

Maintenance & Replace

- **Safety System**
 - Replace Wind Speed Protection System and Display
 - Replace Aircraft Warning Lights
 - Replace Loadcell Weight Protection System and Display





UPGRADING SERVICES

CONTROL SYSTEM 02 STS CRANES

VIMC-DINH VU PORT

Upgrade Control System

- **Hardware: PLC & DC Drive**
 - PLCs: Change to Siemens S7-1500 (newest version)
 - Replace new control cable in Panels
 - Replace new Small Contactors, Relays in Panels



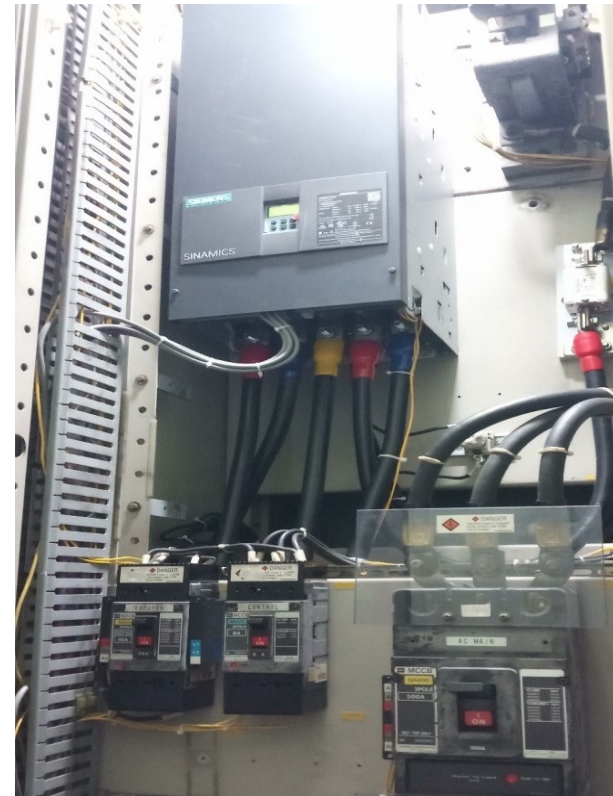


UPGRADING SERVICES

CONTROL SYSTEM 02 STS CRANES
VIMC-DINH VU PORT

Upgrade Control System

- **Hardware: PLC & DC Drive**
 - Drive: Change to Siemens Sinamics DCM (newest version)
 - Change all Field Boards to Emerson FX Modules





UPGRADING SERVICES

CONTROL SYSTEM 02 STS CRANES
VIMC-DINH VU PORT

Upgrade Control System

- **Hardware: Control Desk**
 - Make new Control Desks on Cabin
 - Make new Control Panel for Boom Function.
 - Change to New Modern Joysticks



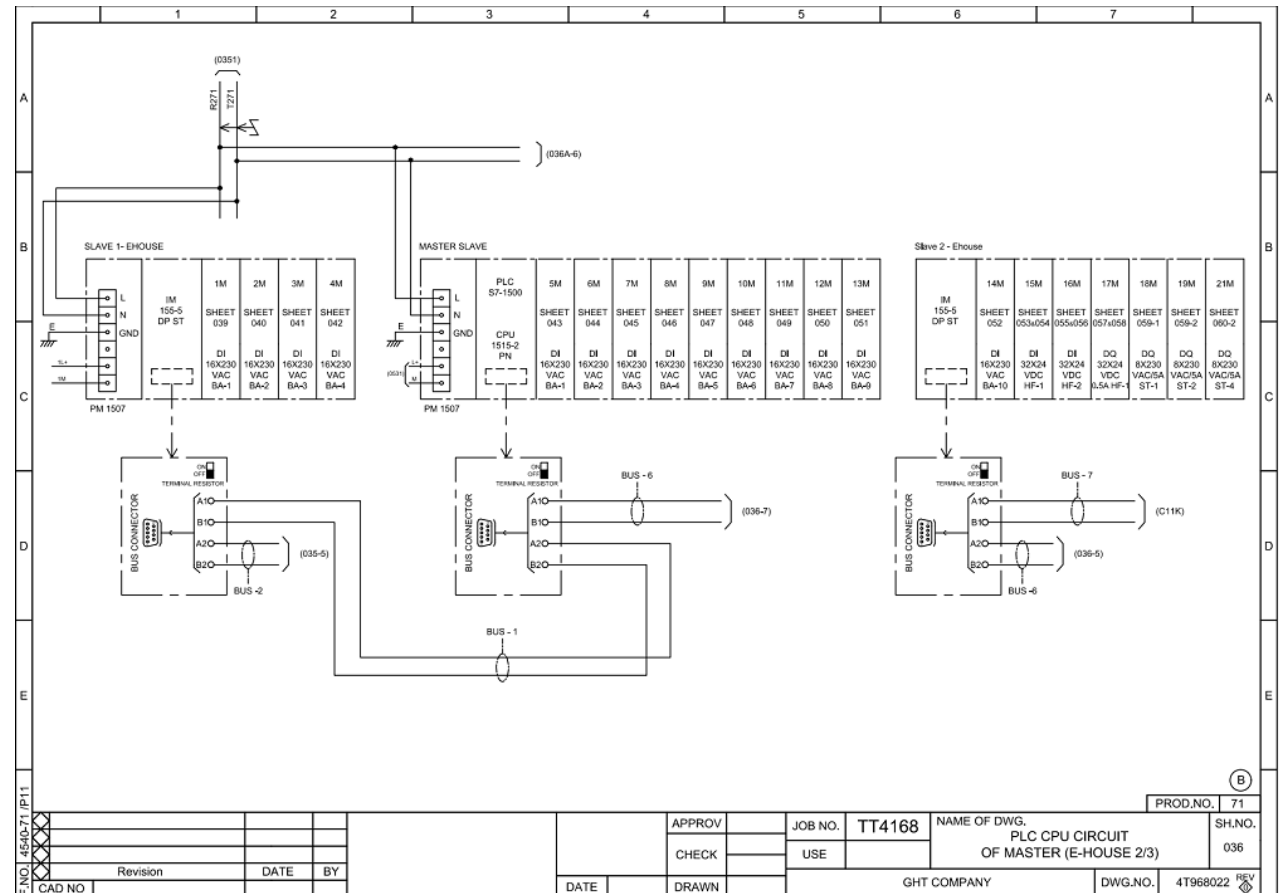


UPGRADING SERVICES

CONTROL SYSTEM 02 STS CRANES VIMC-DINH VU PORT

Upgrade Control System

- **Electrical Drawing:**
 - Make a new Electrical Drawing match to the New Control System



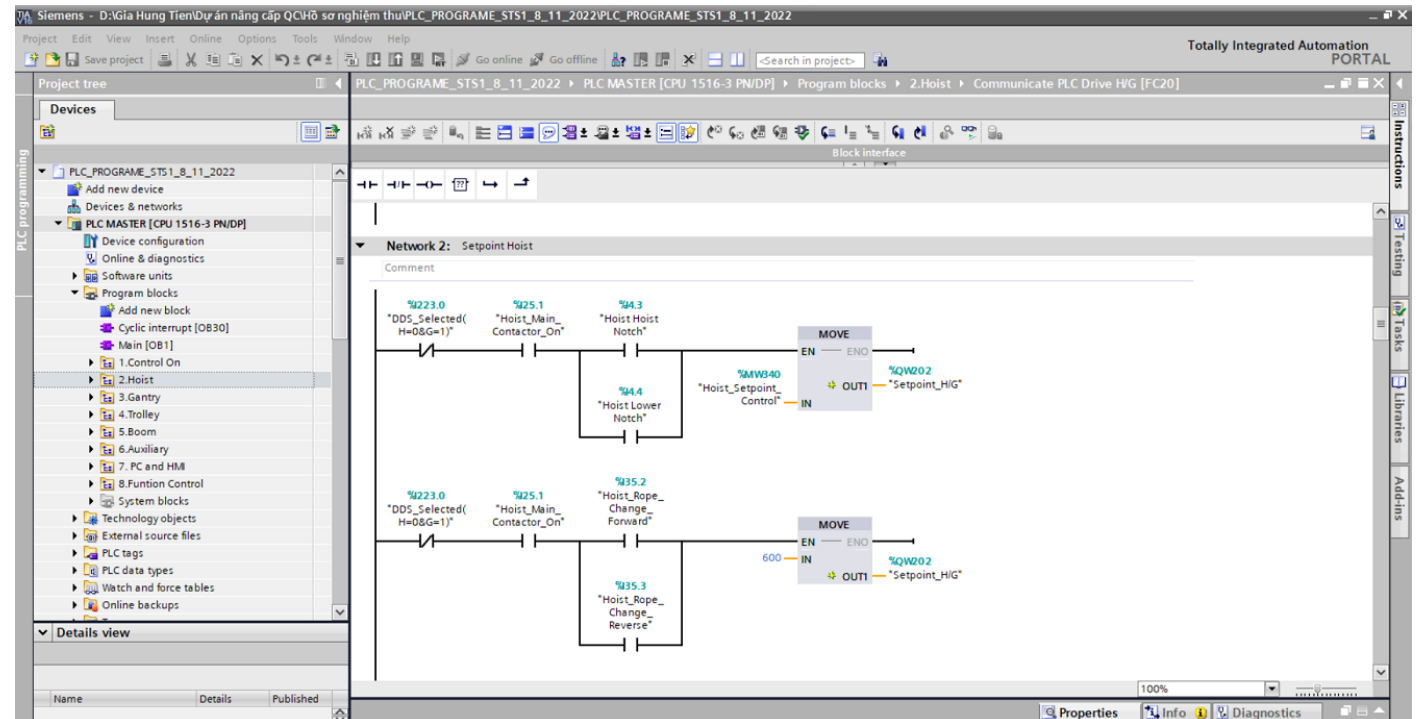


UPGRADING SERVICES

CONTROL SYSTEM 02 STS CRANES VIMC-DINH VU PORT

Upgrade Control System

- **PLC S7 Programming:**
 - Program all STS crane functions.

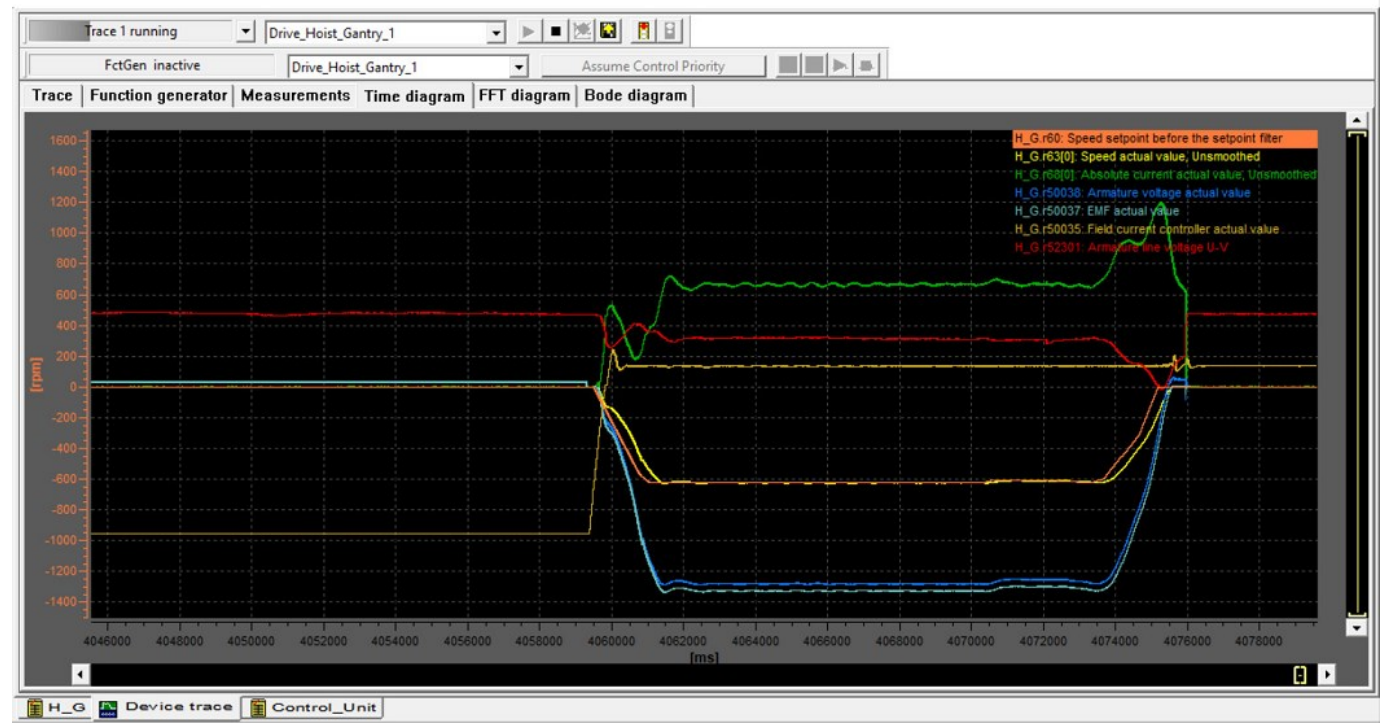


UPGRADING SERVICES

CONTROL SYSTEM 02 STS CRANES VIMC-DINH VU PORT

Upgrade Control System

- **Sinamics DCM Setting Parameters:**
 - Setting Parameters on Sinamics DCM for all functions Hoist, Gantry, Trolley, Boom.
 - Trace and perform optimization of the parameters.



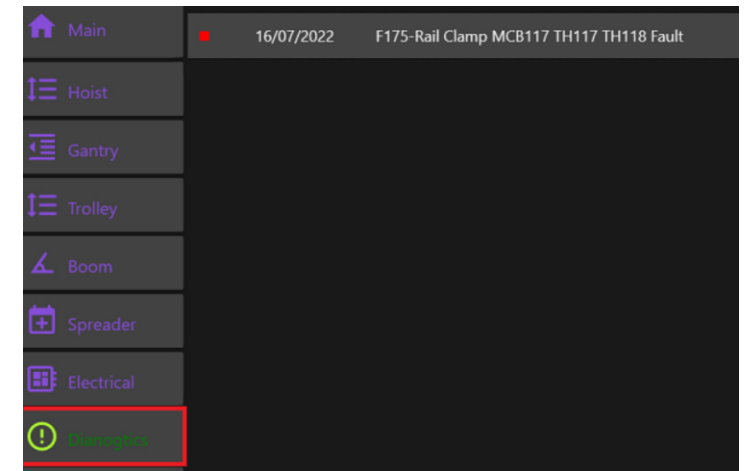


UPGRADING SERVICES

CONTROL SYSTEM 02 STS CRANES VIMC-DINH VU PORT

Upgrade Control System

- **SCADA**
 - HMI on the cabin
 - Computer on the E-room
 - Computer on the Gantry side
 - support Operators/Engineers handle containers, Operation Data of the crane and Faults troubleshooting



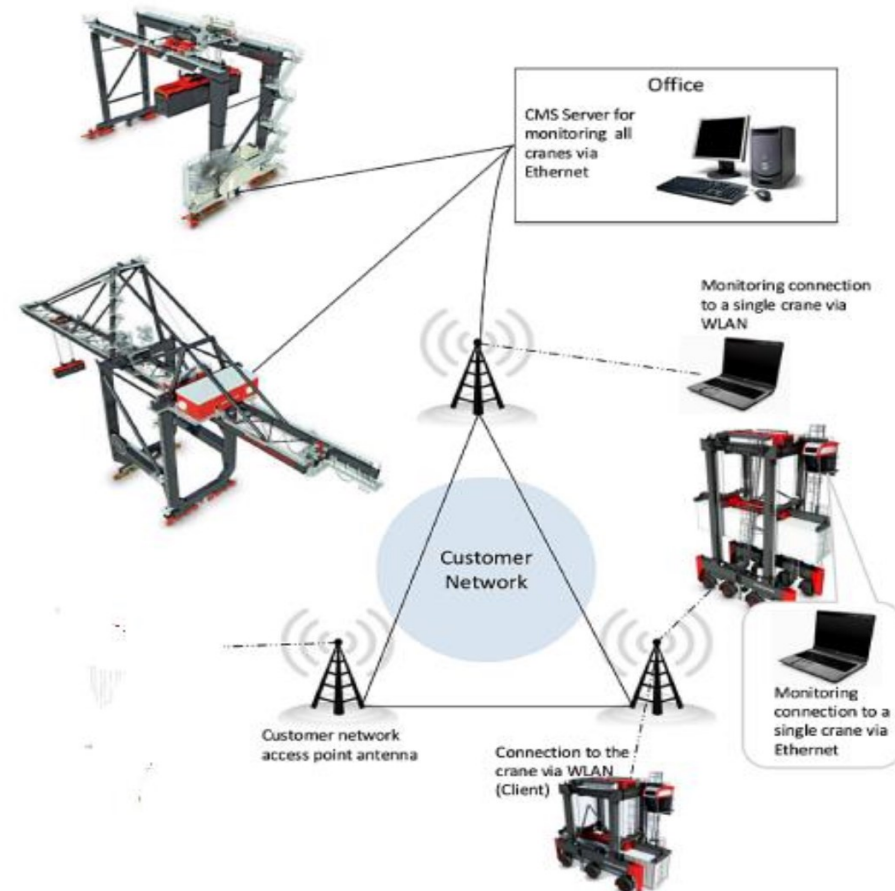


UPGRADING SERVICES

CONTROL SYSTEM 02 STS CRANES VIMC-DINH VU PORT

Upgrade Control System

- **Web CMS:**
 - Web CMS: All Cranes's Data will be transferred to CMS Server via Ethernet (or Internet)



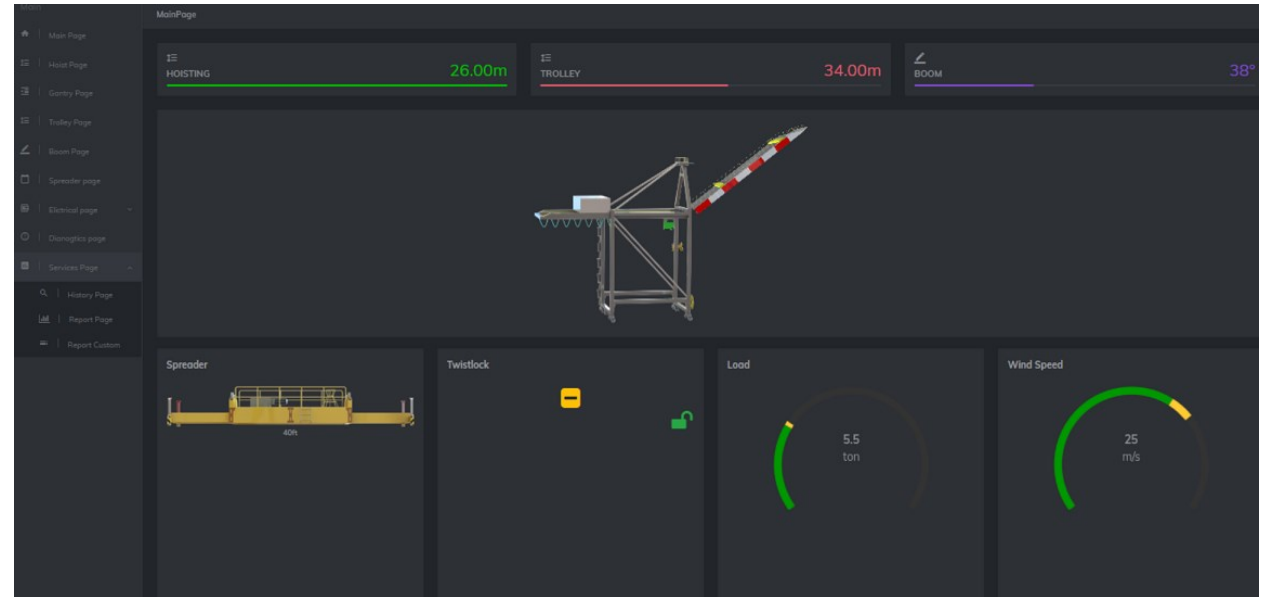


UPGRADING SERVICES

CONTROL SYSTEM 02 STS CRANES VIMC-DINH VU PORT

Upgrade Control System

- **Web CMS For STS Cranes**
 - Let you visualize the real time status of the crane as well as keep record of every operations of the crane. It enables you to remotely monitor, analyze and control your crane from anywhere through internet and make your crane smarter





UPGRADING SERVICES

CONTROL SYSTEM 02 STS CRANES VIMC-DINH VU PORT

Upgrade Control System

- **Web CMS For STS Cranes**
 - Dianogtics
 - History

The screenshot displays the PCCONTROLS web CMS interface. The top navigation bar includes the PCCONTROLS logo, a home icon, and a central control panel with green and blue buttons. The main content area is titled 'Main - STS 02' and features a sidebar menu with options: Main, Hoist, Gantry, Trolley, Boom, Spreader, Electrical, Dianogtics, and Services. The 'History' section is active, showing a table of fault records.

Fault	Comment	Date	Time
F101	F101-Total Master Fault	12/03/23	20:11:26
F101	F101-Total Master Fault	12/03/23	20:00:13
F101	F101-Total Master Fault	12/03/23	19:48:33
F101	F101-Total Master Fault	12/03/23	19:34:08
F101	F101-Total Master Fault	12/03/23	19:25:14
F101	F101-Total Master Fault	12/03/23	19:01:24
F60167	Drive Gantry Fault: F60167-Fault fan speed too slow	12/03/23	06:26:36
F179	F179-Wind Sensor Fault	12/03/23	01:04:59
F1	F01-Hoist joystick Fault	11/03/23	20:59:38
F1	F01-Hoist joystick Fault	11/03/23	20:29:53
F1	F01-Hoist joystick Fault	11/03/23	19:27:42

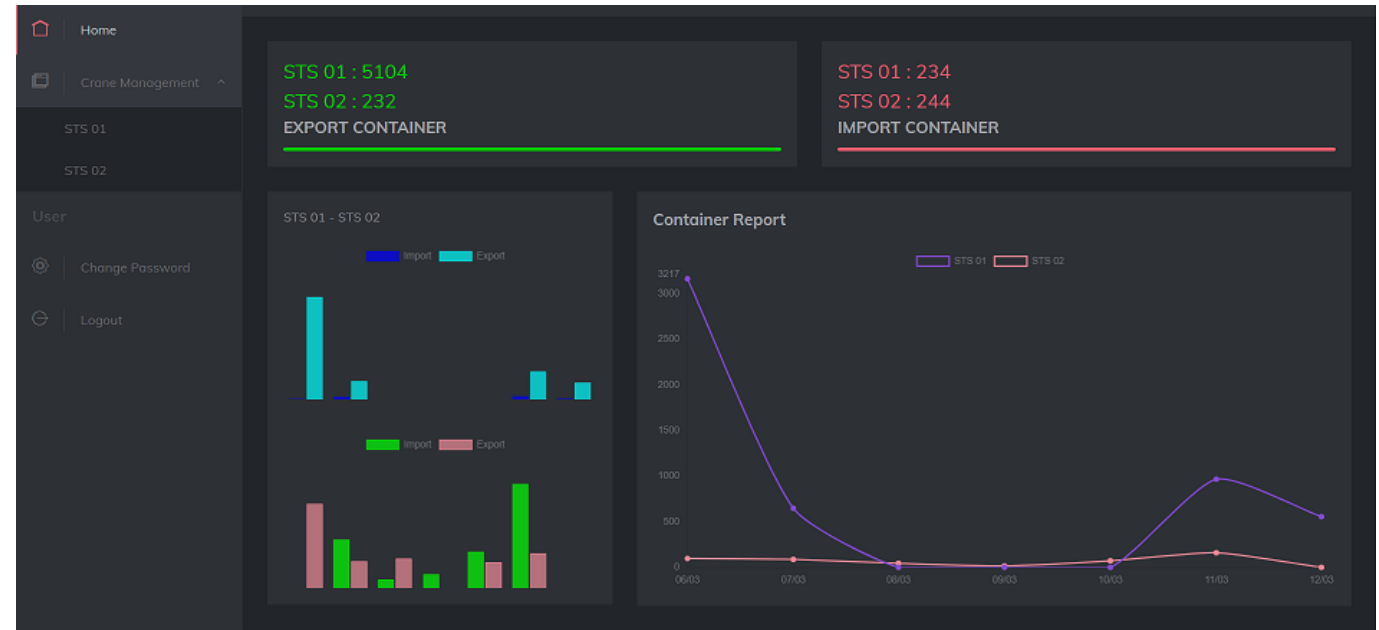


UPGRADING SERVICES

CONTROL SYSTEM 02 STS CRANES VIMC-DINH VU PORT

Upgrade Control System

- **Web CMS For STS Cranes**
 - Report and Analytic





UPGRADING SERVICES

CONTROL SYSTEM 02 STS CRANES

VIMC-DINH VU PORT

Weight Testing and Handover

- **Weight Testing and Handover**





UPGRADING SERVICES

**CONTROL SYSTEM GOTTWALD MOBILE HARBOR CRANES
THI VAI GENERAL PORT**

**Upgrade
Control
System
Gottwald
MHC Crane**

**Thi Vai
General
Port**





UPGRADING SERVICES

**CONTROL SYSTEM GOTTWALD MOBILE HARBOR CRANES
THI VAI GENERAL PORT**

PLC Upgrading

- **Program: Convert Program S5 In Industrial PC104 To Newer Version S7**
- **Hardware: Siemens CPU S7-315 2DP/PN**



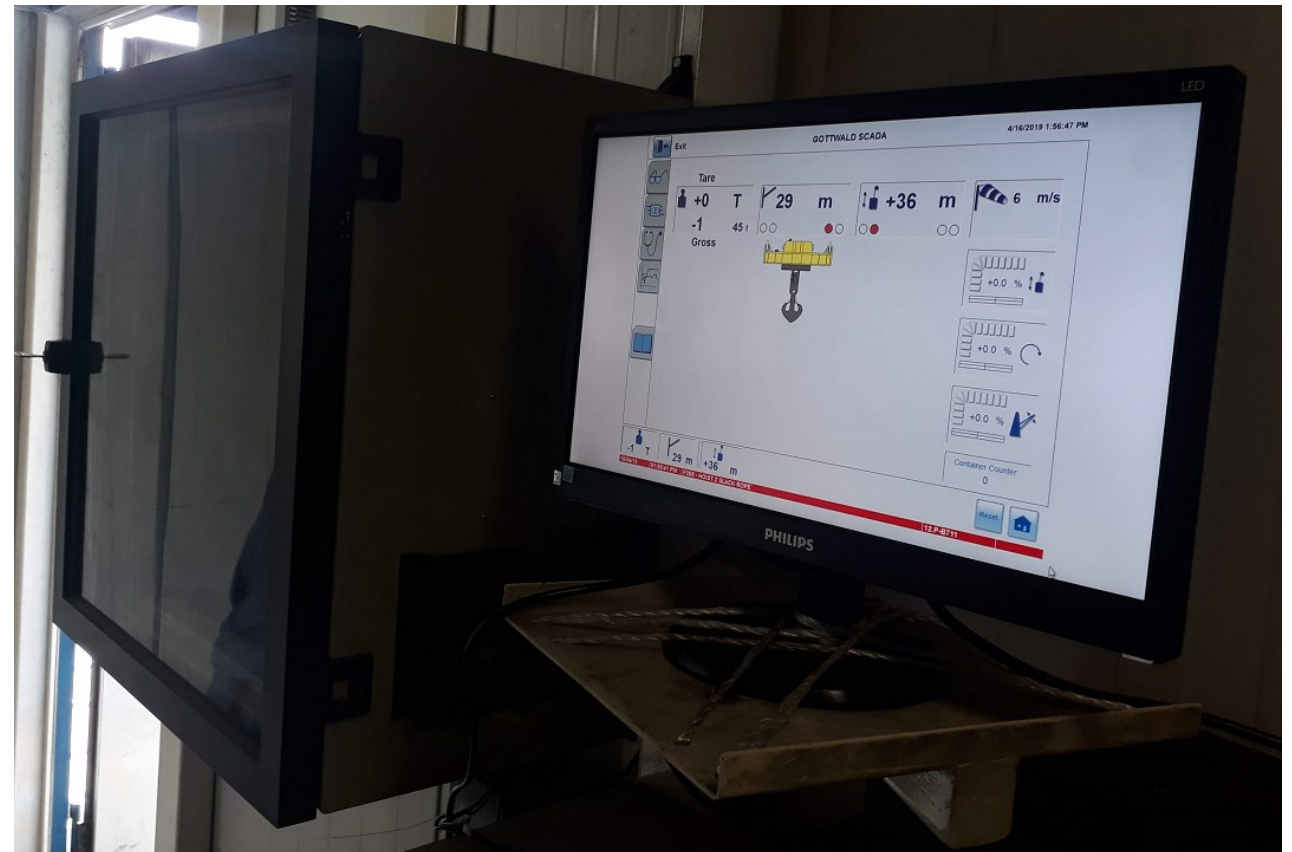


UPGRADING SERVICES

CONTROL SYSTEM GOTTWALD MOBILE HARBOR CRANES THI VAI GENERAL PORT

Scada Upgrading

- **E-house: Provide a computer with Scada**
- **Cabin: Provide a HMI with Scada**



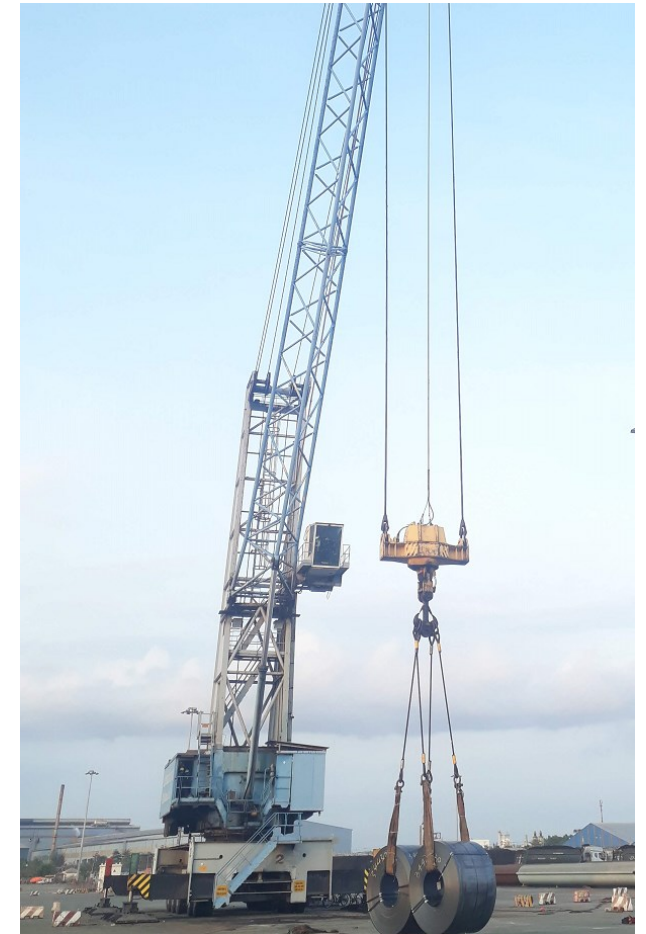


UPGRADING SERVICES

**CONTROL SYSTEM GOTTWALD MOBILE HARBOR CRANES
THI VAI GENERAL PORT**

Weight Testing And Handover

- **Weight Testing and Handover**





UPGRADING SERVICES

CONTROL SYSTEM STS CRANES
SITV PORT

Upgrade
Control
System
STS Cranes
SITVPort





UPGRADING SERVICES

CONTROL SYSTEM STS CRANES
SITV PORT

Upgrade Control System

- **Hardware: PLC & DC Drive**
 - PLCs: Change to Siemens S7-1500 (newest version)
 - Replace new control cable in Panels
 - Replace new Small Contactors, Relays in Panels





UPGRADING SERVICES

CONTROL SYSTEM STS CRANES
SITV PORT

Upgrade Control System

- **Hardware: Control Desk**
 - Make new Control Desks on Cabin
 - Change to New Modern Joysticks





UPGRADING SERVICES

CONTROL SYSTEM STS CRANES
SITV PORT

Maintenance & Replace

- **Safety System**
 - Provide Loadcells Pin
 - Replace Loadcell Weight Protection System



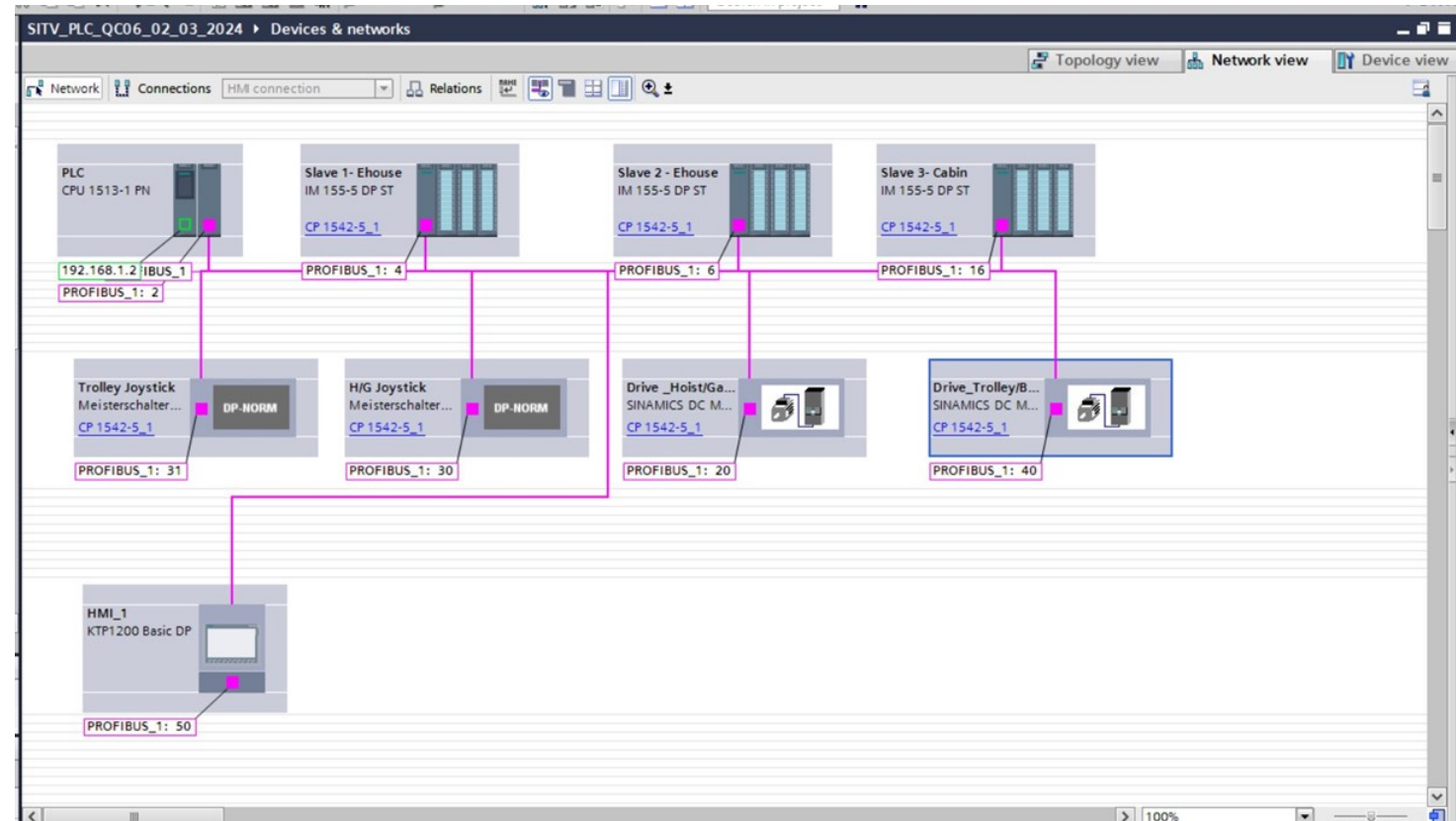


UPGRADING SERVICES

CONTROL SYSTEM STS CRANES SITV PORT

Upgrade Control System

- **PLC S7 Configuration:**
 - PLC S7 New Hardware Configuration

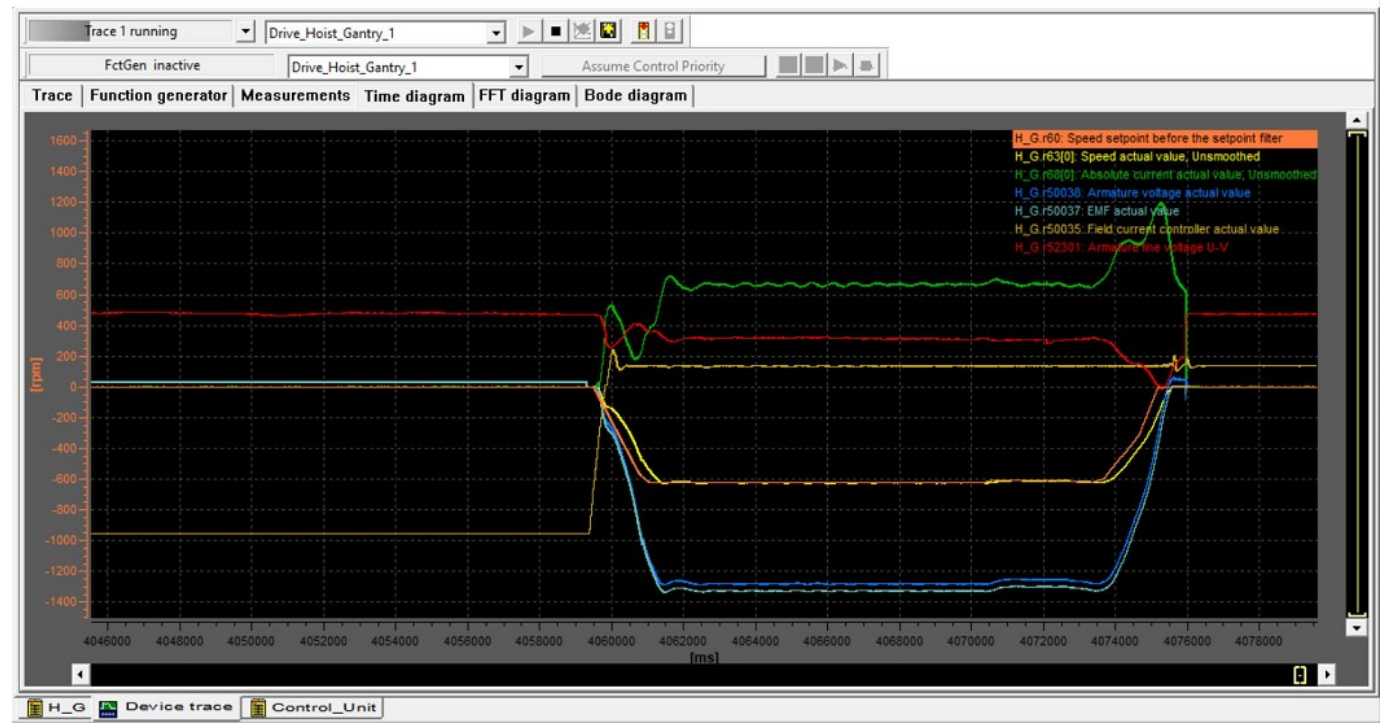


UPGRADING SERVICES

CONTROL SYSTEM STS CRANES SITV PORT

Upgrade Control System

- **Sinamics DCM Setting Parameters:**
 - Setting Parameters on Sinamics DCM for all functions Hoist, Gantry, Trolley, Boom.
 - Trace and perform optimization of the parameters.





UPGRADING SERVICES

CONTROL SYSTEM STS CRANES
SITV PORT

Upgrade Control System

- **CMS Hardware:**
 - HMI: Install 01 New Siemens HMI on Cabin
 - Computer:
 - Install 01 New Computer in E-room (E-House)
 - Install 01 New Computer in Technical Office.

